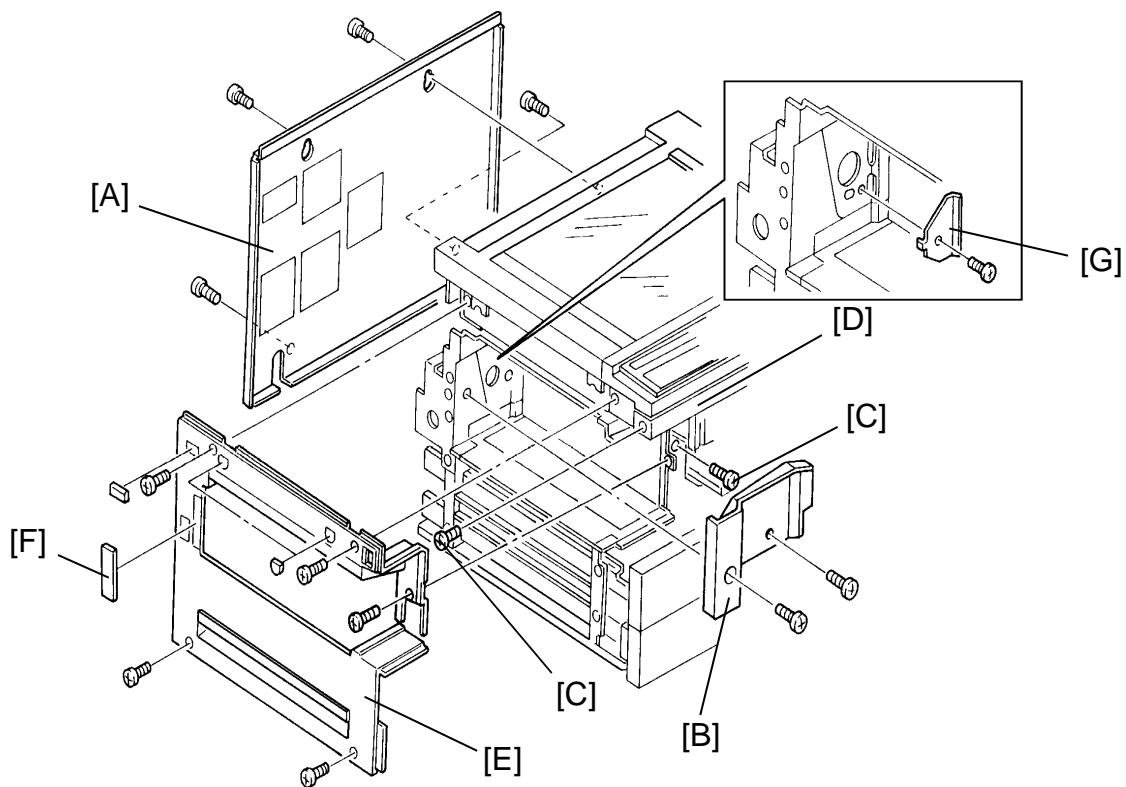


SORTER ADAPTER INSTALLATION (OPTION)

Accessory Check

1. Cover Bracket.....	1
2. Gear Assembly.....	1
3. Cover Plate	1
4. Hinge Bracket.....	1
5. Front Door.....	1
6. Hinge Pin	2
7. Philips Pan Head Screw M4 x 8.....	10
8. Philips Pan Head Screw with Washer	1
9. Installation Procedure.....	1
10. New Equipment Condition Report (-17 machine only)	1

Installation Procedure

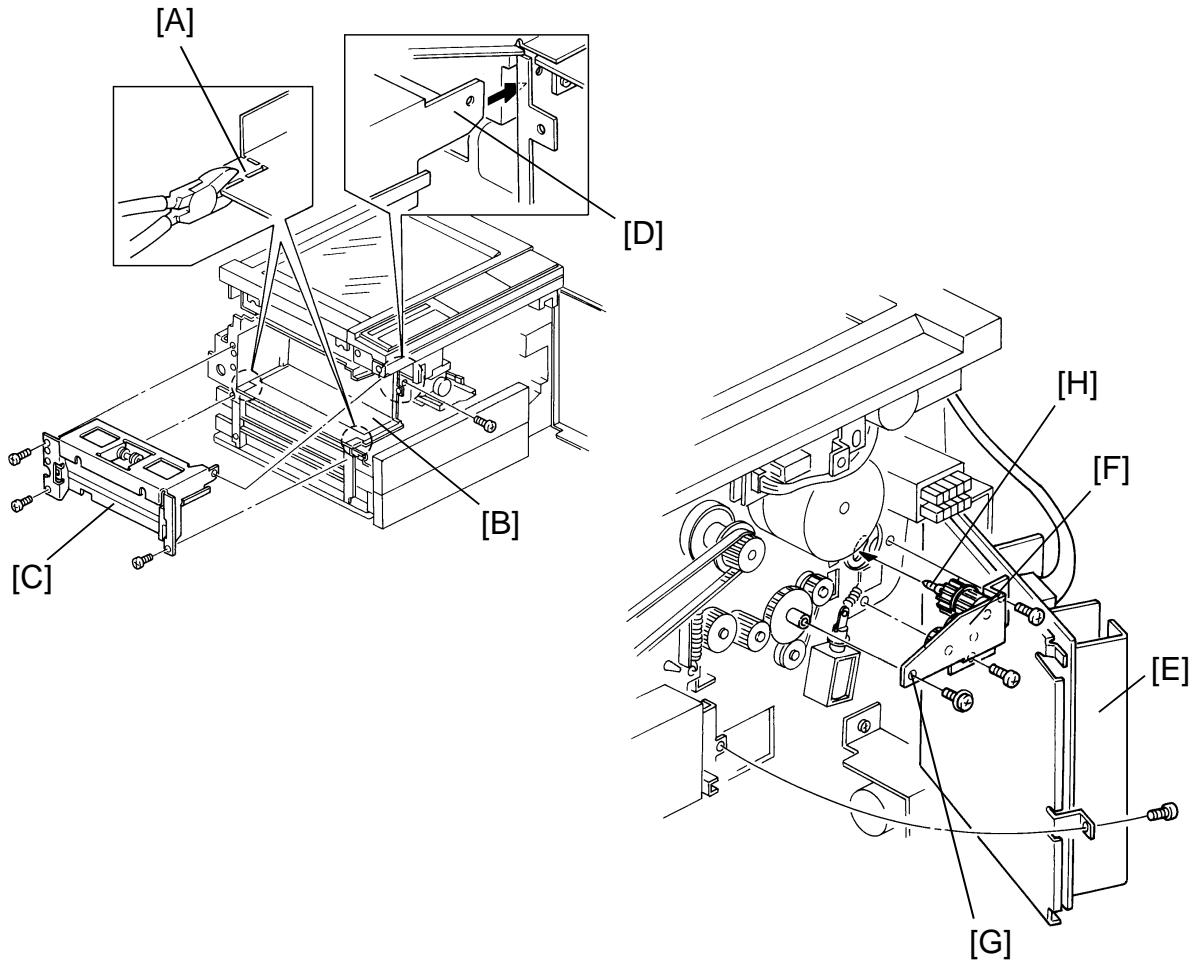


Installation

NOTE: The sorter adapter is required to transport copy papers from the copier exit rollers to the sorter entrance guide plates. It is required when the mini-sorter (A423), midi-sorter (A411), or sorter stapler (A366) is installed.

CAUTION: unplug the copier power cord before starting the following procedure.

1. Remove the copier rear cover [A] (remove 2 screws and loosen 2 screws) and the left small cover [B] (2 screws).
2. Open the front door and pull out the 1st and 2nd (or the paper and duplex) trays.
3. Remove the left and front side screws [C] of the front upper cover [D] and remove the left cover [E] (5 screws).
4. Remove the cover plate [F] from the left cover by cutting it with cutting pliers.
5. Install the cover bracket [G] on the rear side frame as shown (1 screw).



6. Remove the 2 corners [A] of the left bottom cover [B] as shown with the cutting pliers.

7. Install the sorter adapter [C] (4 screws) on the paper exit section of the copier.

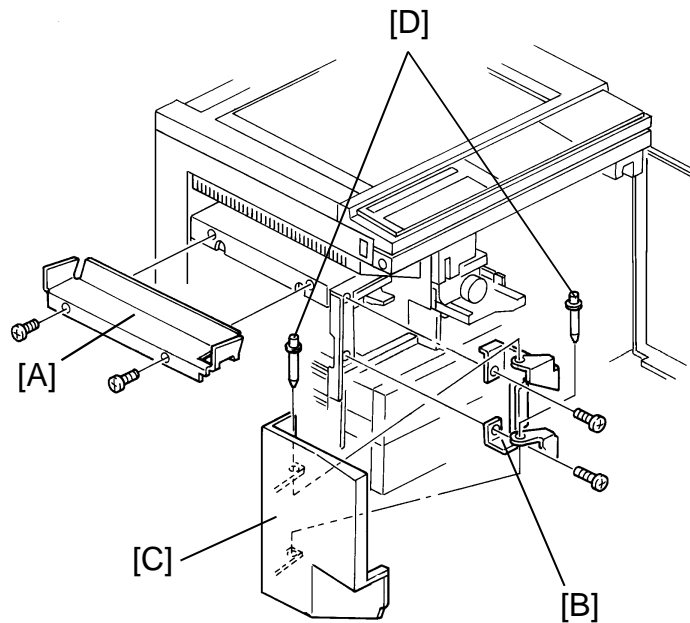
- NOTE:**
- The front upper right part of the sorter adapter bracket [D] should be placed in-between the copier front side plate and the upper exit cover.
 - The top and the bottom screw holes of the rear bracket should be used for securing the sorter adapter.

8. Swing out the dc power supply board assembly [E] (1 screw).

9. Install the gear assembly [F] (3 screws) on the copier rear side plate as shown.

- NOTE:** The positioning hole of the gear assembly bracket [G] should fit over the positioning stud of the copier drive gear. Also, the positioning pin of the gear assembly [H] should be placed in the positioning hole of the sorter adapter bracket.

10. Reinstall the dc power supply board.



Installation

11. Reinstall the copier left cover and secure the left and front sides of the front upper cover.
12. Install the cover plate [A] (2 screws) on the sorter adapter.
13. Install the hinge bracket [B] (2 screws) on the front side plate of the sorter adapter.
14. Install the front door [C] on the hinge bracket with the 2 hinge pins [D].